

Dominique Anderson

**SPEAKER | FACILITATOR
CONSULTANT**

Dominique Anderson is a highly-rated speaker, facilitator, educator, and consultant, with 20+ years of experience as an entrepreneur, including success in education and training, public relations, and real estate/affordable housing strategy. She is passionate about creating thriving communities, increasing diversity in mission-aligned real estate development, and empowering communities through social entrepreneurship. She who works with individuals, groups, and organizations to inspire collaboration and create thriving communities, across the globe.



SIGNATURE TOPICS

- ✓ Empowering Change: Social Entrepreneurship and Sustainable Community Development
- ✓ Women at the Helm: Leadership and Innovation in Mission-Driven Real Estate
- ✓ Building Communities with Purpose: The Role of Mission-Driven PR and Real Estate
- ✓ Diversity by Design: Inclusive Strategies for Mission-Aligned Real Estate
- ✓ Resilient Housing: Strategies for Thriving in Challenging Times
- ✓ Mission-Driven Real Estate: Fostering Diversity and Inclusion in Development

7,000+
LinkedIn Contacts & Followers

25,000+
social media views

20+
years of leadership & training

15+
years of real estate experience

AS SEEN IN

**Urban Land
Institute**

**NASHVILLE
BUSINESS
JOURNAL**

**Memphis Daily
News**

**REGIONAL &
NATIONAL NEWS
MEDIA**

DOMINIQUE ANDERSON

Equitable Development
Inclusive Communities
Affordable Housing
Social Impact
Consultant | Speaker



COLLABORATION PACKAGES: REAL ESTATE & COMMUNITY DEVELOPMENT

AFFORDABLE HOUSING: STARTING AT \$5,000

Explore innovative affordable housing solutions for developers, municipalities, and organizations committed to community well-being.

- **Keynote presentation:** "Building the Foundation: Affordable Housing as the Cornerstone of Thriving Communities"
- Customized workshop for practical implementation

DIVERSITY IN DEVELOPMENT: STARTING AT \$6,500

Foster diversity and inclusion in mission-aligned real estate development, creating stronger, more vibrant communities.

- **Keynote presentation:** "Mission-Driven Real Estate: Fostering Diversity and Inclusion in Development"
- Panel discussion on diversity in real estate

SOCIAL ENTREPRENEURSHIP & COMMUNITY EMPOWERMENT: STARTING AT \$7,500


Empower communities through social entrepreneurship, fostering sustainability and resilience. **Keynote presentation:** "Empowering Resilience: Social Entrepreneurship for Sustainable Communities"


- Interactive workshop on social entrepreneurship

CONTACT DETAILS

Please feel free to contact me for any concerns or questions.

 dpa@populacecommunity.com

 www.populacecommunity.com
www.communityfocuspr.com

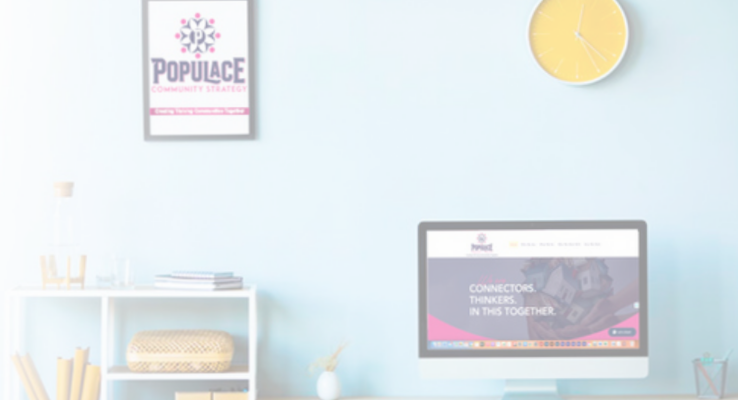
 901-686-4497



DOMINIQUE ANDERSON
CONSULTING

DOMINIQUE ANDERSON

Equitable Development
Inclusive Communities
Affordable Housing
Social Impact
Consultant | Speaker



COLLABORATION PACKAGES: REAL ESTATE & COMMUNITY DEVELOPMENT

WOMEN LEADERS IN REAL ESTATE: STARTING AT \$8,000

Highlight and empower women leaders in mission-driven real estate development.

- **Keynote presentation:** "Women Shaping Communities: A Spotlight on Leadership in Real Estate Development"
- Women in Real Estate panel discussion

COLLABORATIVE STRATEGIES FOR COMMUNITY DEVELOPMENT: STARTING AT \$6,000


Develop effective collaborative strategies for mission-aligned organizations, municipalities, and developers.


- **Keynote presentation:** "Collaborative Strategies: How Mission-Aligned Organizations Can Drive Community Development"
- Interactive workshop on collaborative planning

CONTACT DETAILS

Please feel free to contact me for any concerns or questions.

 dpa@populacecommunity.com

 www.populacecommunity.com
www.communityfocuspr.com

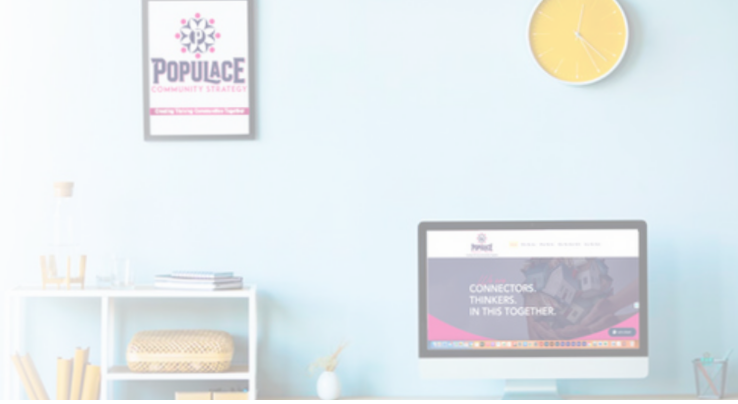
 901-686-4497



DOMINIQUE ANDERSON
CONSULTING

DOMINIQUE ANDERSON

Equitable Development
Inclusive Communities
Affordable Housing
Social Impact
Consultant | Speaker



COLLABORATION PACKAGES: MISSION-DRIVEN PUBLIC RELATIONS

COMMUNITY DEVELOPMENT PR ESSENTIALS: STARTING AT \$6,500

Master the art of public relations in community development, ensuring your projects receive the attention and support they deserve.

- **Keynote presentation:** "Strategies for Effective PR in Community Development"
- Workshop on crafting compelling narratives
- Media training for community leaders and spokespeople

MISSION-DRIVEN REAL ESTATE PR MASTERY: STARTING AT \$8,000

Elevate the public relations efforts of mission-driven real estate development, enhancing visibility and community engagement.

- **Keynote presentation:** "Building Buzz: Public Relations for Mission-Driven Real Estate"
- PR strategy development workshop
- Media outreach training for project teams

CONTACT DETAILS

Please feel free to contact me for any concerns or questions.



dpa@populacecommunity.com



www.populacecommunity.com
www.communityfocuspr.com



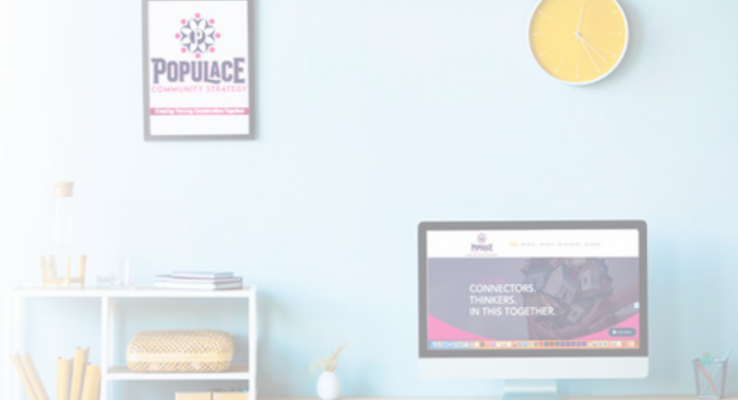
901-686-4497



DOMINIQUE ANDERSON
CONSULTING

DOMINIQUE ANDERSON

Equitable Development
Inclusive Communities
Affordable Housing
Social Impact
Consultant | Speaker



COLLABORATION PACKAGES: MISSION-DRIVEN PUBLIC RELATIONS

INTEGRATED PR CAMPAIGN FOR COMMUNITY IMPACT; STARTING AT \$10,000

Master the art of public relations in community development, ensuring your projects receive the attention and support they deserve.

- **Keynote presentation:** "Integrated PR Strategies for Community Impact"
- Hands-on workshop for campaign planning
- Media relations coaching for key stakeholders
- Ongoing support for campaign execution

CRISIS COMMUNICATION AND COMMUNITY DEVELOPMENT: STARTING AT \$7,500

Develop effective crisis communication strategies tailored to community development challenges, ensuring resilience and reputation management.

- **Keynote presentation:** "Navigating Challenges: Crisis Communication in Community Development"
- Crisis simulation workshop
- Media response training for community leaders
- Post-crisis consultation session with Dominique

CONTACT DETAILS

Please feel free to contact me for any concerns or questions.



dpa@populacecommunity.com



www.populacecommunity.com
www.communityfocuspr.com



901-686-4497



DOMINIQUE ANDERSON
CONSULTING